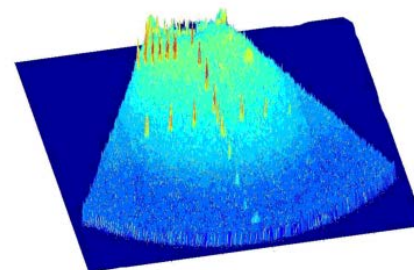
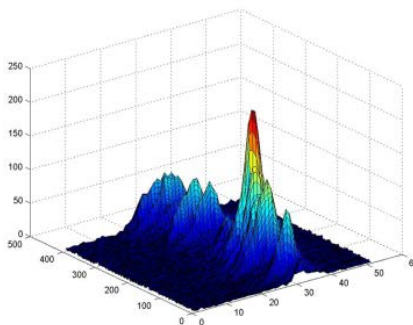
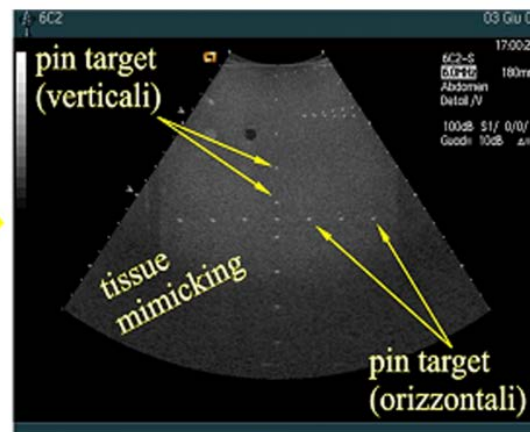
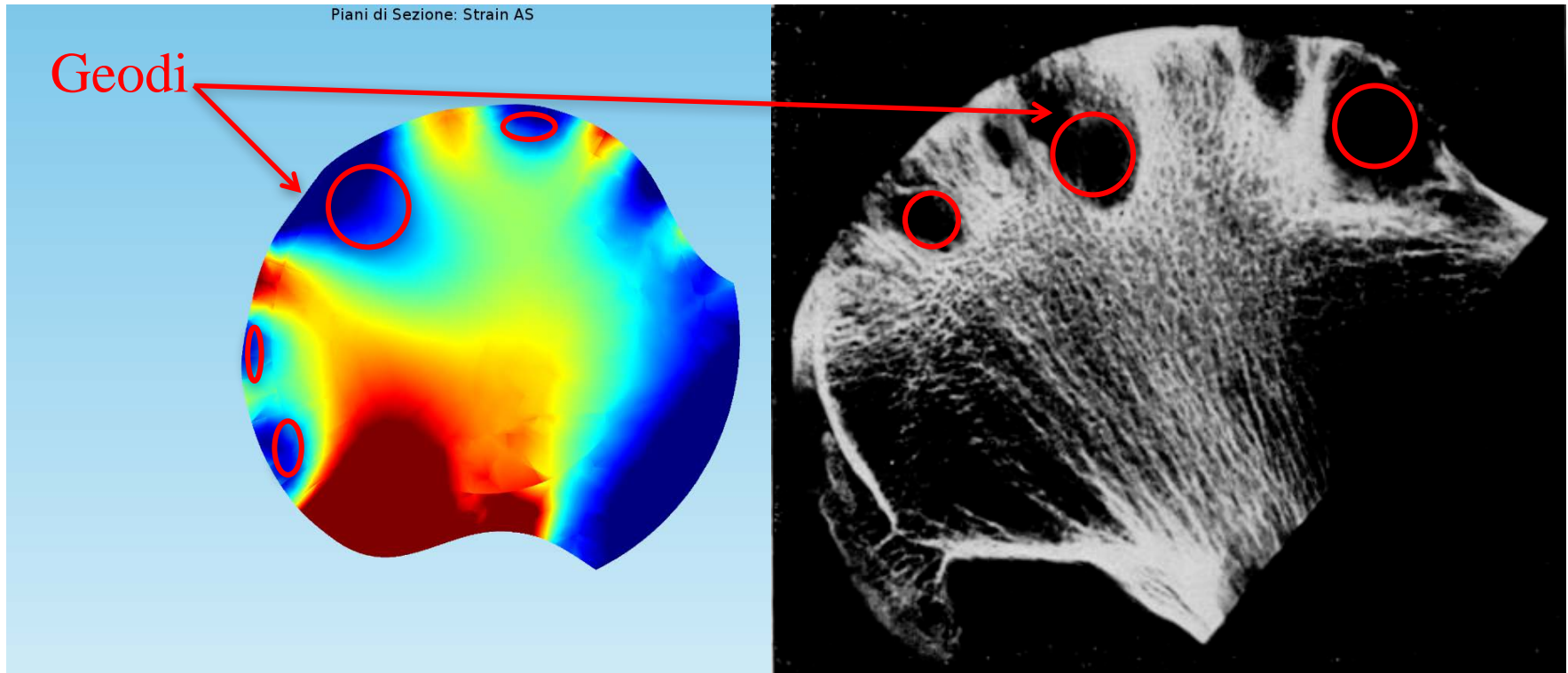


Analisi della tecnologia e verifica delle prestazioni di apparecchiature Biomedicali.



- Studio di materiali biologici (tessuto osseo)

- Modellazione ad elementi finiti
- Scansione mediante micro-CT



Rehabilitation Engineering - collaborazioni con Fondazione Santa Lucia, Policlinico Italia



Contents lists available at ScienceDirect

Neuroscience Letters

journal homepage: www.elsevier.com/locate/neulet



Research paper

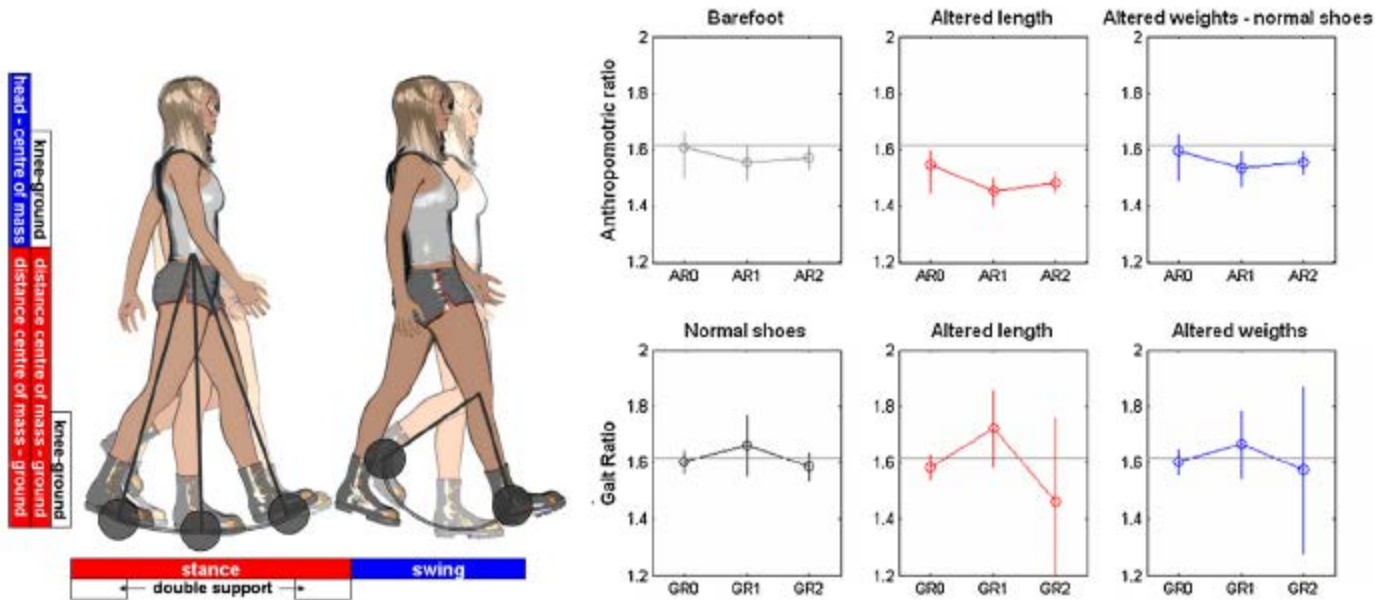
The connection between anthropometry and gait harmony unveiled through the lens of the golden ratio



Marco Iosa^{a,*}, Giovanni Morone^a, Fabiano Bini^b, Augusto Fusco^a, Stefano Paolucci^a, Franco Marinozzi^b

^a Clinical Laboratory of Experimental Neurorehabilitation, Santa Lucia Foundation, I.R.C.C.S., via Ardeatina 306, 00179 Rome, Italy

^b Department of Mechanical and Aerospace Engineering, "Sapienza" University of Rome, via Eudossiana 18, 00184 Rome, Italy



Analisi di immagini ECO, TAC, NMR di organi e distretti anatomici (osso, rene, fegato, tiroide) e ricostruzione 3D per valutazioni biometriche e prototipazione virtuale di strumenti chirurgici

-

Collaborazioni con Policlinico Umberto I, Ospedale S. Andrea

